



# **PREMIUM TOILET PARTITIONS**

**STAINLESS STEEL  
POWDER COATED STEEL  
SOLID PLASTIC (HDPE)  
PLASTIC LAMINATE  
PHENOLIC**

**AAMCO**  
ALL AMERICAN METAL CORP.

# STAINLESS STEEL



For lasting beauty that blends into any washroom design and will easily withstand years of use, no matter how high-volume, stainless steel is the top choice. Resistant to corrosion, rust, staining, and offering simplified maintenance, this is an ideal option for any heavily trafficked washroom. This material is available in a standard #4 brushed finish, or you may select from a number of optional textured finishes for greater durability and design appeal. This material is available in any of the four design styles.

## CONSTRUCTION

- 18-22 Gauge Stainless Steel
- Interlocking Molding
- Double Faced Honeycomb Core
- Welded And Polished Corners

## FIRE RATING

- Class A
- Smoke Development: 25
- Flame Spread: 0

## WARRANTY

- 10 years

## SERIES

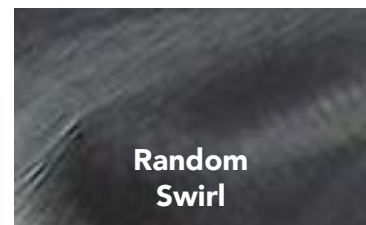
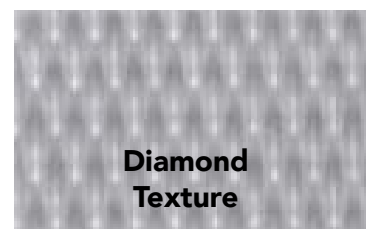
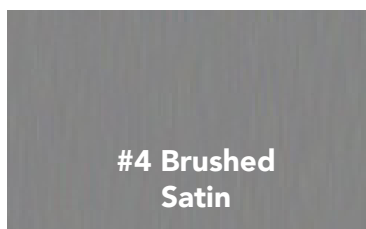
- The Standard
- Essential Privacy 58"
- Premier Privacy 63.5"
- Premier Privacy Plus 72"
- Junior Height
- Privacy Screens

## MOUNTING STYLES

- Headrail Braced
- Floor Supported
- Ceiling Hung
- Floor to Ceiling



## FINISHING TYPES:



# POWDER COATED

---



Powder coated steel partitions offer remarkable quality and durability at an affordable price. Electro-galvanized steel is bonded to a cellular honeycomb core with all edges interlocked and corners welded for maximum structural integrity. The thermosetting powder coating is electrostatically applied to ensure a uniform thickness and produces a finish that is highly resistant to fading, scuffing and staining. Availability in 20 contemporary colors makes it simple to find an option that will complement any washroom.

## CONSTRUCTION

- 18-22 Gauge Stainless Steel
- Interlocking Molding
- Double Faced Honeycomb Core
- Welded And Polished Corners
- Powder Coated Paint

## FIRE RATING

- Class A
- Smoke Development: 30
- Flame Spread: 5

## WARRANTY

- 1 year

## COLORS

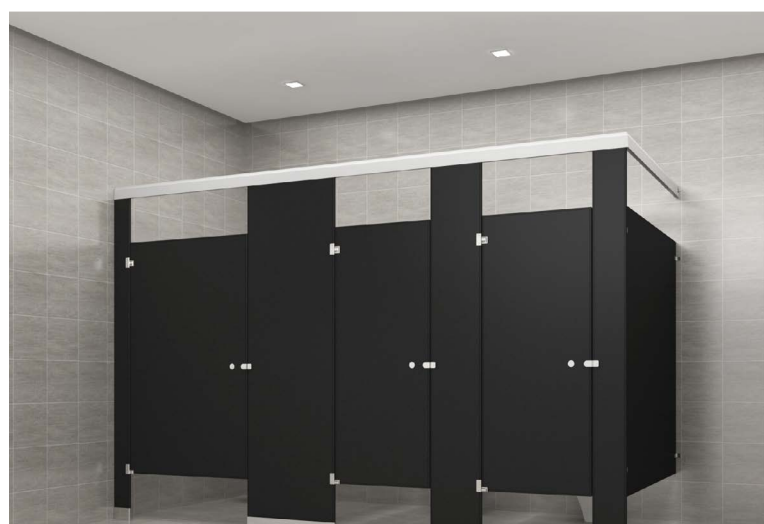
- 20 In Stock Colors
- Custom Colors Available Upon Request

## SERIES

- The Standard
- Essential Privacy 58"
- Premier Privacy 63.5"
- Premier Privacy Plus 72"
- Junior Height
- Privacy Screens

## MOUNTING STYLES

- Headrail Braced
- Floor Supported
- Ceiling Hung
- Floor to Ceiling



# DIAMOND LINE



A unique textured metal with Diamond patterns available in a variety of colors for powder coated steel. A powder-coated steel installation offers remarkable quality and durability at an affordable price. A state-of-the-art electrostatic process applies a thermosetting powder coating to an electro-galvanized diamond textured steel partition, creating an installation that combines the strength of steel with a superior protective finish that resists fading, scuffing and staining. The same diamond patterned texture is available in our high quality durable Stainless Steel component. This attractive, durable material will suit any washroom design.

## CONSTRUCTION

- ▣ 18-22 Gauge Diamond Textured Galvanized Steel
- ▣ Interlocking Molding
- ▣ Doubled Faced Honeycore Core
- ▣ Welded Corners
- ▣ Powder Coated Paint

## COLORS

- ▣ 20 In Stock Colors
- ▣ Custom Colors Available Upon Request

## FIRE RATING

- ▣ Class A
- ▣ Smoke Development: 30
- ▣ Flame Spread: 5

## WARRANTY

- ▣ 1 years

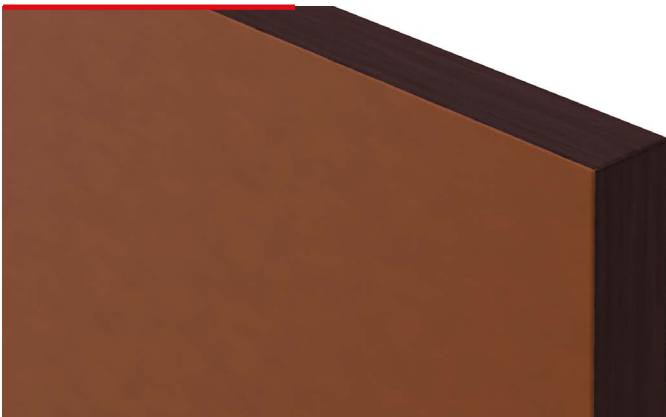
## SERIES

- ▣ All

## MOUNTING STYLES

- ▣ All

# PHENOLIC



An incredibly strong material that can withstand the abuse associated with heavy washroom traffic, solid phenolic core is a great option for any project. This material is resistant to water, staining and impact, enabling it to stand up to high-volume usage. Available in an incredible array of colors and patterns, this material offers great design flexibility that will stay beautiful for years.

## CONSTRUCTION

- ▣ Melamine Impregnated Decorative Papers Superimposed Over A Varying Number Of Melamine Impregnated Kraft Paper Sheets.
- ▣ All Sheets Are Fused Together Under High Temperature And Pressure
- ▣ Decorative Sheets Are Applied And Bonded

## COLORS

- ▣ Phenolic Core (30+ Color Options)
- ▣ Color Thru (5 Color Options)
- ▣ All Wilson Art Colors Available

## SERIES

- ▣ All

## FIRE RATING

- ▣ Class B
- ▣ Smoke Development: 110
- ▣ Flame Spread: 45

## MOUNTING STYLES

- ▣ Headrail Braced
- ▣ Floor To Ceiling

## WARRANTY

- ▣ 10 years

# SOLID PLASTIC (HDPE)



Our High Density Polyethylene (HDPE) material offers the highest level of durability for high traffic areas. Waterproof, resistant to denting or vandalism, and impervious to humidity or corrosion, these partitions are resilient, long-lasting and very simple to maintain. Material and color finishes offered are homogenous, not a surface application, so delamination is never a concern. A solid plastic installation is a great option for any high-volume washroom project.

## CONSTRUCTION

- ▣ High Density Polyethylene (HDPE)
- ▣ CNC Machined
- ▣ Rounded Edges And Corners

## COLORS

- ▣ 17 In Stock Colors

## FIRE RATING

- ▣ Class B
- ▣ Smoke Development: 450
- ▣ Flame Spread: 50

## SERIES

- ▣ All

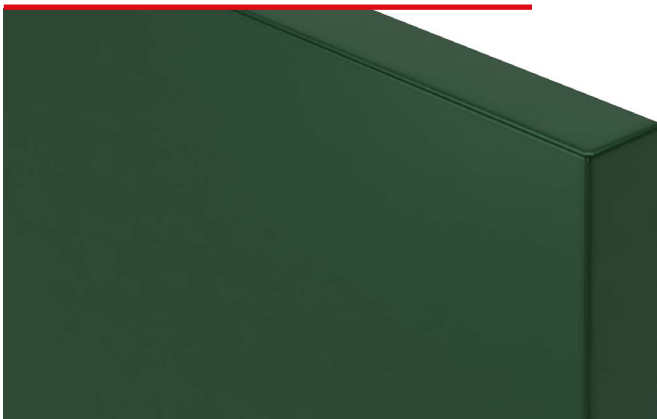
## MOUNTING STYLES

- ▣ Headrail Braced
- ▣ Ceiling Hung
- ▣ Floor to Ceiling

## WARRANTY

- ▣ 15 years

# PLASTIC LAMINATE



The recommended choice when the emphasis is on aesthetics and affordability. The high-pressure plastic laminate finish is bonded under pressure to a solid, impact-resistant particleboard core. The smooth, resilient finish provides an easy-to-clean partition that is resistant to surface dirt, staining, and corrosion. Plastic laminate is available in an incredible range of colors and patterns to offer unlimited design flexibility for any new or existing washroom.

## CONSTRUCTION

- ▣ Resin Impregnated Particle Board
- ▣ Decorative Plastic Laminate Sheet
- ▣ Non-toxic, Water Resistant Adhesive
- ▣ No Splices Or Joints

## COLORS

- ▣ Over 30 Color Options
- ▣ All Wilson Art Colors Available

## SERIES

- ▣ All

## FIRE RATING

- ▣ Class C
- ▣ Smoke Development: 180
- ▣ Flame Spread: 130

## MOUNTING STYLES

- ▣ All

## WARRANTY

- ▣ 1 year

# PARTITIONS BY STYLES

## FLOOR SUPPORTED

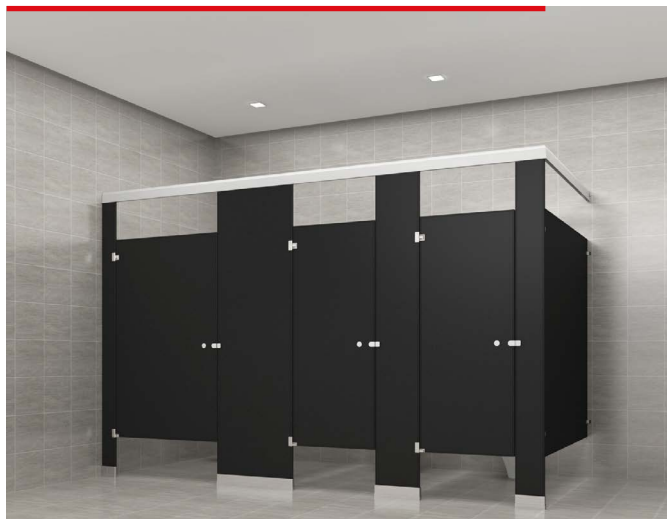
TYPE F/S



This highly versatile style of installation offers modern appeal that will suit any architectural decor concept. The uniform, flush-top design easily adapts to any washroom and the lack of overhead hardware provides a more spacious feel. Secure installation of this style partition requires a solid concrete floor allowing for a minimum 2" penetration anchoring system.

## HEADRAIL BRACED

TYPE H/B



For a low-cost, easy installation, our Headrail-braced style is one of the best choices you can make. This popular type of installation requires no special floor construction, making it ideal for either new or existing buildings. Featuring a combined floor anchoring system and a tough, anti-grip aluminum headrail, this option makes for an incredibly secure installation with minimal difficulty.

## CEILING HUNG

TYPE C/H



The open style of this installation offers a unique blend of aesthetic and practical appeal. The absence of floor hardware provides a clean, contemporary design that will complement any washroom. The unobstructed access to floor also allows for simplified maintenance, making this style especially well-suited to washrooms having wall-hung fixtures. For proper installation of this partition style, structural steel ceiling supports are required.

## FLOOR TO CEILING

TYPE F/C



For busy washrooms that see an increased level of use and abuse, the floor-to-ceiling style of installation provides the highest degree of protection and resistance to vandalism available. The strongest and most durable style of installation, this incredibly secure design will help keep any high-traffic washroom beautiful for years to come. Proper installation of this style partition requires both structural ceiling supports and concrete floors.

# PARTITIONS BY SERIES

## THE STANDARD



The Standard series is our most basic and cost efficient partitions we offer. It is completely configurable and available in all of our current styles, colors, and materials. The Standard parameters include 58" high doors and panels assembled within a normal configuration, available with various mounting options and chrome plated hardware. All products are manufactured to the highest quality and composition requirements with the availability of custom specifications. This series can be customized to order and takes advantage of significant in-stock inventory that can be assembled and delivered promptly. Our team can assist in designing and implementing the order seamlessly in compliance with all regulations including the Americans with Disabilities Act (ADA).

### DIMENSIONS

- ▣ 58" High Panels & Doors
- ▣ Pilasters Vary Based On Ceiling Height & Mounting Style

### PRIVACY PACKAGE

- ▣ Available Upon Request

### MATERIALS

- ▣ All

### USES

- ▣ High Traffic Areas
- ▣ Public Restrooms

### BENEFITS

- ▣ Cost Effective
- ▣ Easy Maintenance

## ESSENTIAL PRIVACY 58"



The Essential Privacy Series provides the blending of the same components as The Standard Series, using 58" high panels and doors. They are complemented with full height continuous brackets and privacy strips mounted between the doors and pilasters for a no gap and completely private solution. This series can be customized to order and takes advantage of significant in-stock inventory that can be assembled and delivered promptly. Our team can assist in designing and implementing the order seamlessly in compliance with all regulations.

### DIMENSIONS

- ▣ 58" High Panels & Doors
- ▣ Pilasters Vary Based On Ceiling Height & Mounting Style

### PRIVACY PACKAGE

- ▣ Included: Full Height Aluminum Brackets & Privacy Strip Set
- ▣ Optional: Color Matching Or Stainless Steel

### MATERIALS

- ▣ All

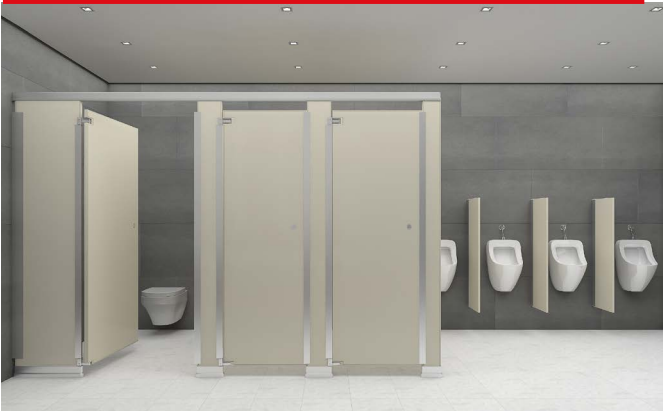
### USES

- ▣ High Traffic Areas
- ▣ Private Facilities
- ▣ Unisex Restrooms
- ▣ Changing Rooms

### BENEFITS

- ▣ Cost Effective
- ▣ Easy Maintenance
- ▣ Increased Privacy

## PREMIER PRIVACY 63.5"



Our Premier Privacy Series increases the panel and door sizes to 63.5 inches high. This Series is available in all mounting styles, colors and materials. This series completely eliminates all unnecessary sight lines with the included full height, continuous brackets for mounting panels and pilasters, while the accompanied privacy strips eliminate the door gaps. This series can be customized to order and takes advantage of significant in-stock inventory that can be assembled and delivered promptly. Our team can assist in designing and implementing the order seamlessly in compliance with all regulations.

### DIMENSIONS

- ▣ 63.5" High Panels & Doors
- ▣ Pilasters Vary Based On Ceiling Height & Mounting Style

### PRIVACY PACKAGE

- ▣ Included: Full Height Aluminum Brackets & Privacy Strip Set
- ▣ Optional: Color Matching Or Stainless Steel

### MATERIALS

- ▣ All

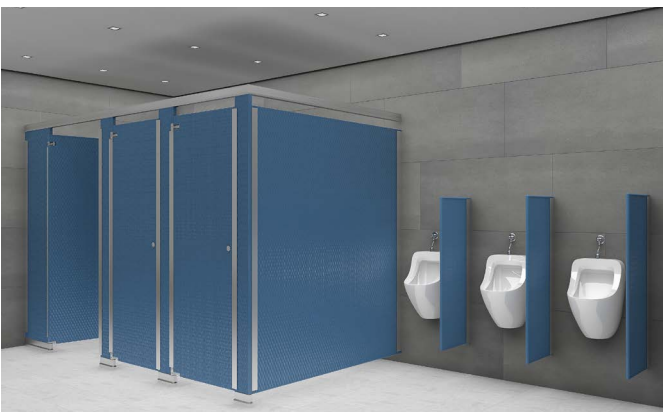
### USES

- ▣ Private Facilities
- ▣ Unisex Restrooms
- ▣ Changing Rooms

### BENEFITS

- ▣ Increased Privacy
- ▣ Zero Sight Lines

## PREMIER PRIVACY PLUS 72"



Our top design for total privacy is our Premier Privacy Plus Series. The panels and doors are constructed with an impressive 72" height providing a truly private, beautiful and unique design for any bathroom facility. The design completely eliminates all sight lines and field of vision for total concealment. This Series is available in all styles, colors and materials which includes full height continuous brackets to eliminate gaps between the wall, panel, and pilaster connections, and privacy strips to eliminate door gaps. This series can be customized to order and takes advantage of significant in-stock inventory that can be assembled and delivered promptly. Our team can assist in designing and implementing the order seamlessly in compliance with all regulations.

### DIMENSIONS

- ▣ 72" High Panels & Doors
- ▣ Pilasters Vary Based On Ceiling Height & Mounting Style

### PRIVACY PACKAGE

- ▣ Included: Full Height Aluminum Brackets & Privacy Strip Set
- ▣ Optional: Color Matching Or Stainless Steel

### MATERIALS

- ▣ All

### USES

- ▣ High Traffic Areas
- ▣ Private Facilities
- ▣ Unisex Restrooms
- ▣ Changing Rooms

### BENEFITS

- ▣ Cost Effective
- ▣ Easy Maintenance
- ▣ Increased Privacy



# JUNIOR HEIGHT



This child friendly concept incorporates up to date safety requirements needed for assuring the security of our younger users. Our Junior Height partitions are designed for maximum utilization of space and capacity, while educating our youngest generation on how to use public restrooms. They allow for guardians to oversee our youth while still providing complete privacy. The doors and panels are designed utilizing our wide array of our colors and materials, and the style is configured for the needs of the facility seeking this configuration. This series can be customized to order with various heights and depths. Our team can assist in designing and implementing the order seamlessly in compliance with all regulations.

# PRIVACY SCREENS



We offer the industry's most comprehensive selection of privacy/urinal screens. Choose from our various mounting styles including wall hung, floor supported, post supported, and headrail braced screens and from our many heights and types. Our standard urinal screen height is 48" and we offer 12", 18", and 24" wide, while our standard privacy screen height is 58" in height and available in widths ranging from 10" to 69". Our wedge type urinal screen, available in various heights and widths, will make a beautiful addition to any bathroom. Its unique design is multifunctional, easy to install, and is extremely durable for high traffic restrooms. All of our privacy and urinal screens are available in a wide variety of colors and materials and our team would be honored to assist you in incorporating them into your plans.

## ALL AMERICAN METAL PRODUCTS QUALIFY FOR LEED CERTIFICATION POINTS AS FOLLOWS:

LEED CATEGORY	SECTION & POINTS	DESCRIPTION	POWDER COATED STEEL	STAINLESS STEEL	PLASTIC LAMINATE	PHENOLIC	SOLID PLASTIC (HDPE)	
Recycled Content	MR 4.1 (1)	Post Consumer	51%	23%	-	-	- *	
	MR 4.2 (1)	Post Industrial	26%	45%	24%	21%	30%	
Local / Regional Materials	MR 5.1 (1)	Final Assembly Point	Freeport, NY 11520					
Rapidly Renewable Materials	MR 6.0 (1)	Content	2%	2%	48%	65%	-	
Certified Wood	MR 7.1 (1)	FSC -Certified	-	-	91%	-	-	
Low Emitting Materials	EQ 4.1 (1) EQ 4.2 (1)	VOC Content of Adhesives/Paint Below Defined Limits	Yes- Adhesives Yes- Paint	Yes- Adhesives	Yes- Adhesives	N/A	N/A	
	EQ 4.4 (1)	Free of Added Urea-Formaldehyde Resins	Yes	Yes	Yes	Yes	Yes	
		GREENGUARD Certified	No	No	Yes	Yes	No	

\* 100% Post Consumer Available

# EXPERIENCE YOU CAN RELY ON

Our team brings over 50 years of experience to the design, manufacture & sales of toilet and bathroom partitions, screens, shower units & related products. We work closely with architects and commercial site owners to create custom & cost-effective solutions that are built for a lifetime of service. It will always be our goal to provide durable products that are not only attractive and modern but are practical for all types of commercial spaces.

- High-Quality Materials & Hardware
- Serving All Across North America To Commercial Clients
- Competitive pricing with low maintenance cost
- ADA Compliant Options & Environmentally friendly

## SERVICE LINKS

-  SPECIFICATION
-  INSTALLATION
-  WARRANTY
-  LEED

WE OFFER AN ONLINE PARTITION DESIGNER

## 48 HOUR EXPRESS SHIPPING.

We know how critical it is for you to receive your orders on time. We offer a guaranteed turnaround on all of our standard products.

## CONTACT US

-  200 Buffalo Avenue, Freeport, NY 11520-4732
-  516.623.0222
-  516.623.5809
-  info@allamericanmetal.com
-  www.allamericanmetal.com

